

Victoria: Shared Services, Examples and Experiences



Existing Services : Shared School Route Buses

School Route/Town Services

Metropolitan = 300

Regional = 300

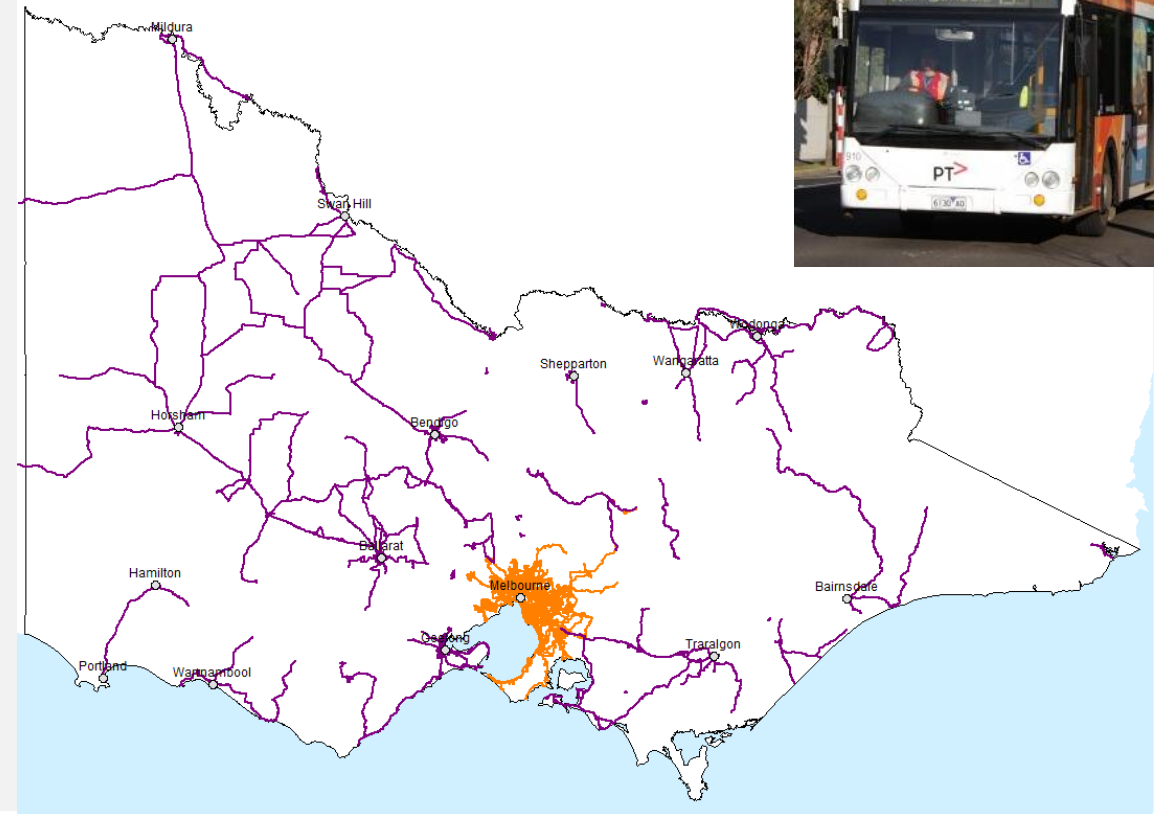
Services are shared

Can be used by Public

Public Usage = 2 % approx.

Issues: Crowded

Noisy, Times not useful



Existing Services : School Bus Program (SBP) Buses (Dedicated school only buses)

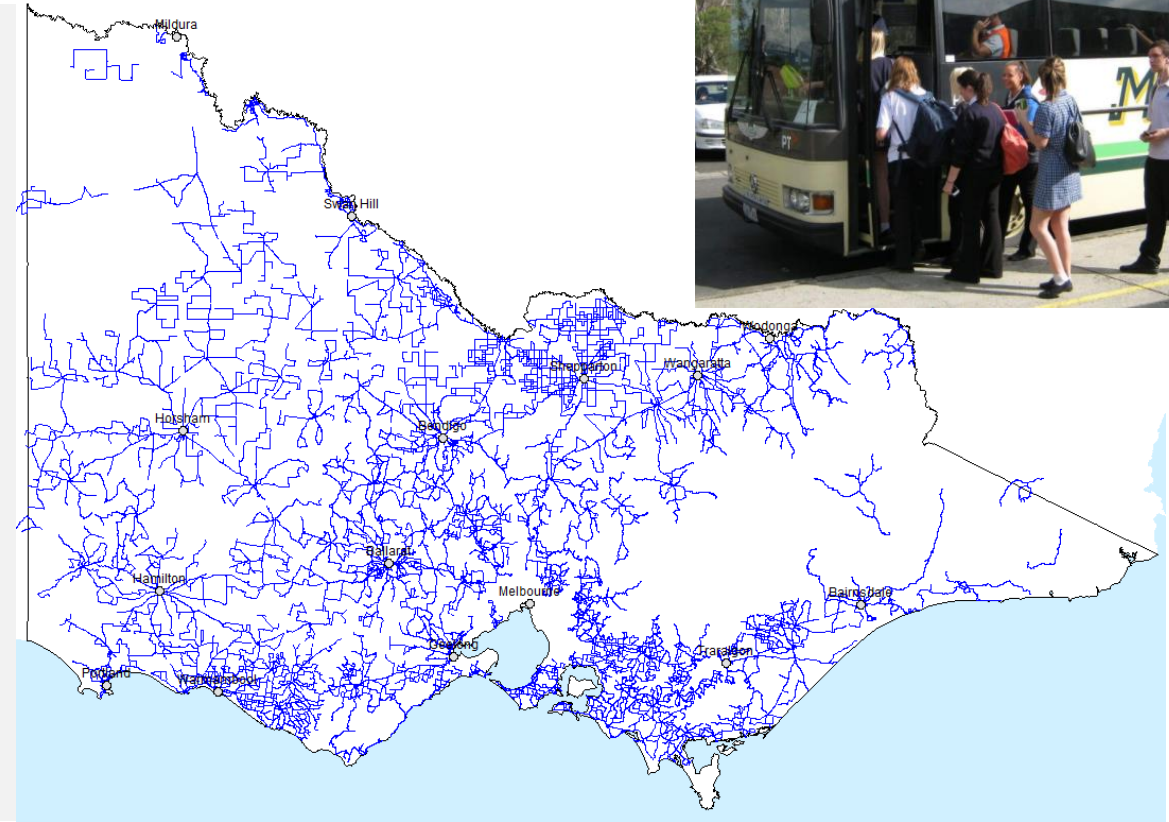
School Bus Program

Metropolitan = 150

Regional = 1300

Only shared with special permission

- Teachers
- School Workers
- Tafe Students



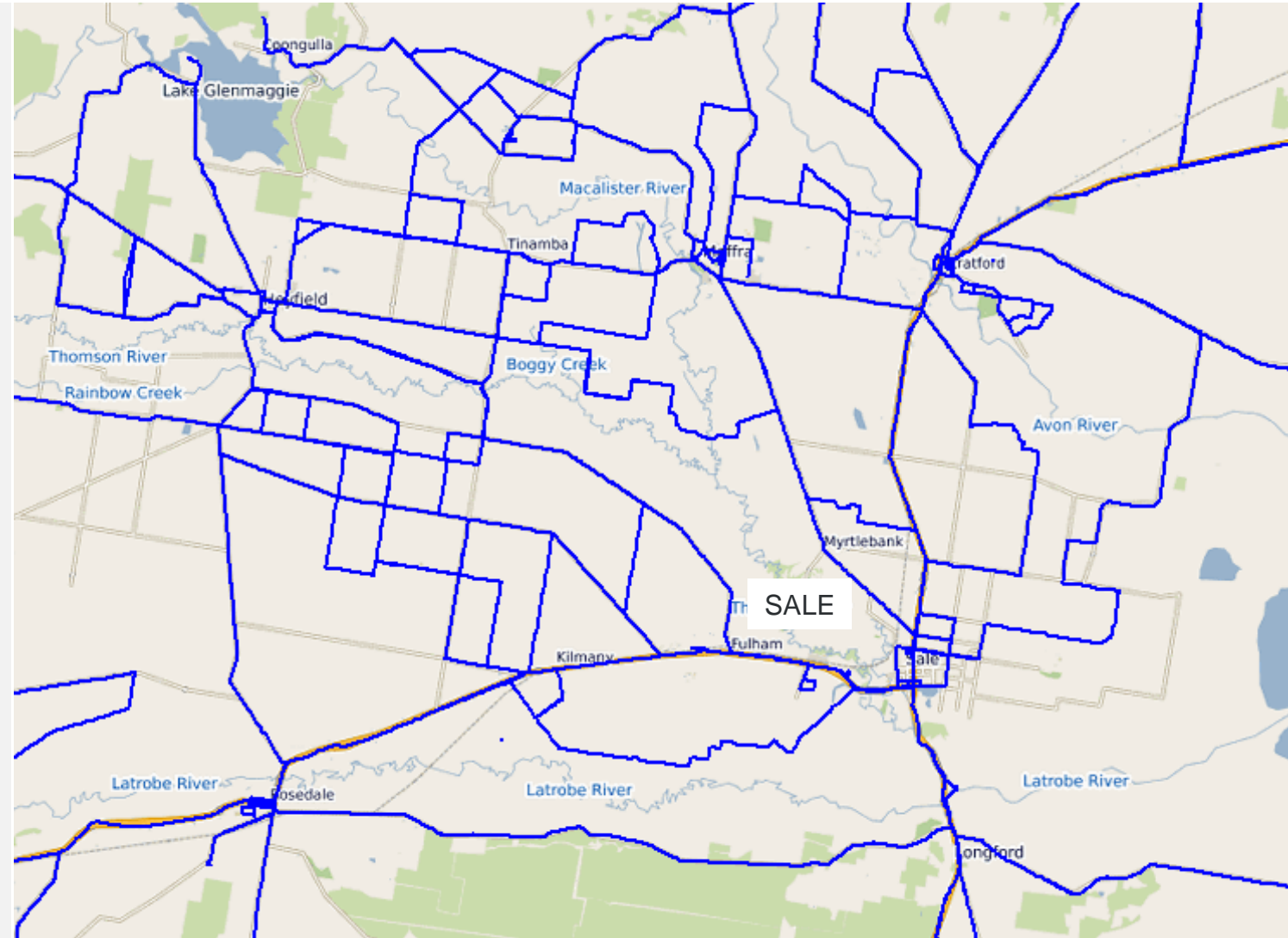
Case Study: Gippsland School Bus Flexibility Project

Purpose : Improved usage of SBP Buses:

- Utilise the Sale School Bus Network of 27 SBP buses
- Allow for members of the public to utilise school buses
- Travellers must be pre-approved by School centre principal as per School Bus Policy

Learnings

- Still in progress
- Very successful
- No additional cost
- Peak usage of to 130 travellers per day
- Mostly post secondary (Tafe) students, teachers and a few general public travellers.



Case Studies: Colac Shared School Bus Trial

Purpose : Improve usage of SBP Buses:

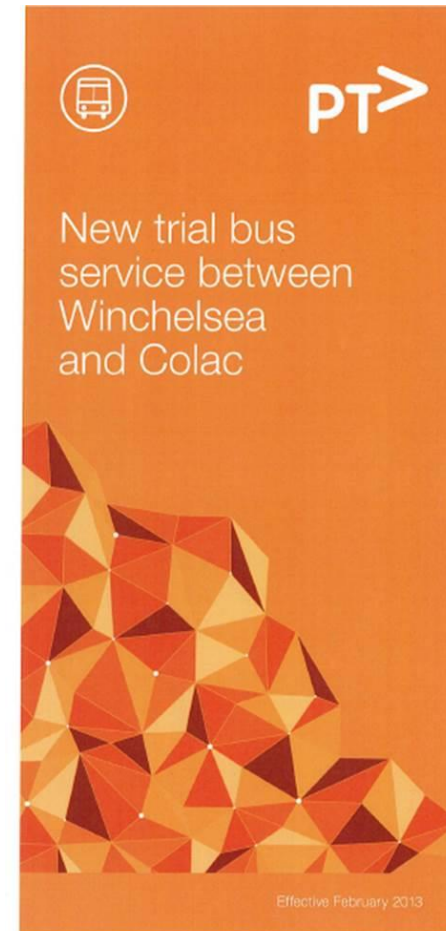
- Allow holders of students passes and pensioner cards to access SBP school buses.
- This circumvented the School Bus Policy of only allowing vetted non school passengers on these buses.
- Very limited usage (Average 1 pass over the 2 year trial)

Learnings

- Trial was very limited and the only regular user had Tafe school times that were suited to the school bus times
- Pensioners used the services very rarely.
- Long wait for return trip (typical shopper trip 3-4 hours max)
- Service not a good experience for Adult passengers.

Possible Improvements

- Better marketing
- Better target areas
- Provide return trips through the day.



PT >

New trial bus service between Winchelsea and Colac

Effective February 2013

From Monday XX February, the Winchelsea to Colac school bus will open its spare seats to student and senior concession card holders, on a trial basis.

The timetable will be:

	Weekday mornings
The Vault, Winchelsea	7.25 am
Austin St, Winchelsea	7.30 am
Colac Secondary College	8.20 am
Dennis St, Colac	8.22 am

	Weekday afternoons
Colac Secondary College	3.48 pm
Dennis St, Colac	3.50 pm
The Vault, Winchelsea	4.25 pm
Austin St, Winchelsea	4.27 pm

To catch the bus:

- > Show your student or senior concession card to the driver
- > Pay your fare to the driver (\$1.90 one-way or \$3.60 return)
- > Sit in the designated public seats

Your fare will also allow you to catch Colac town buses.

Public Transport Victoria welcomes all feedback about this trial. Feedback about the trial can be sent to schoolbus@ptv.vic.gov.au

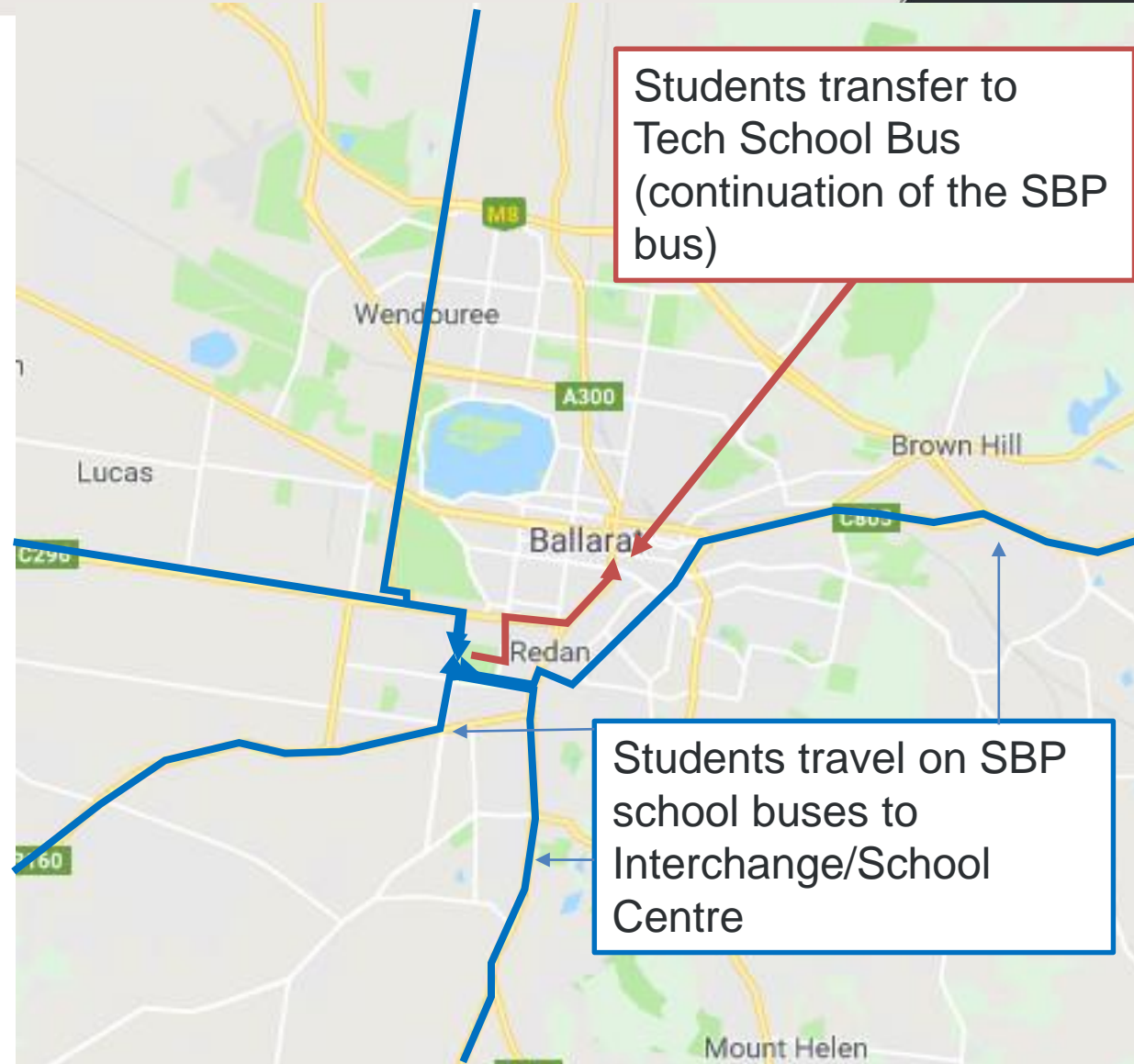
Case Studies: Tech School Buses

Purpose : Improved usage of SBP Buses:

- Allow for additional legs on SBP buses to service new Tech Schools
- Use existing resources already paid for (buses and drivers)
- Set Tech School times to allow for both trips
- School students can remain on bus or a simple one transfer applied

Learnings

- Still in progress (8 Centres included)
- Very successful
- Limited cost (kilometre costs only)
- Operators have been very keen to sign on



Questions ?

