

ACT GOVERNMENT

CANBERRA IS BETTER CONNECTED

Transforming student transport in the ACT

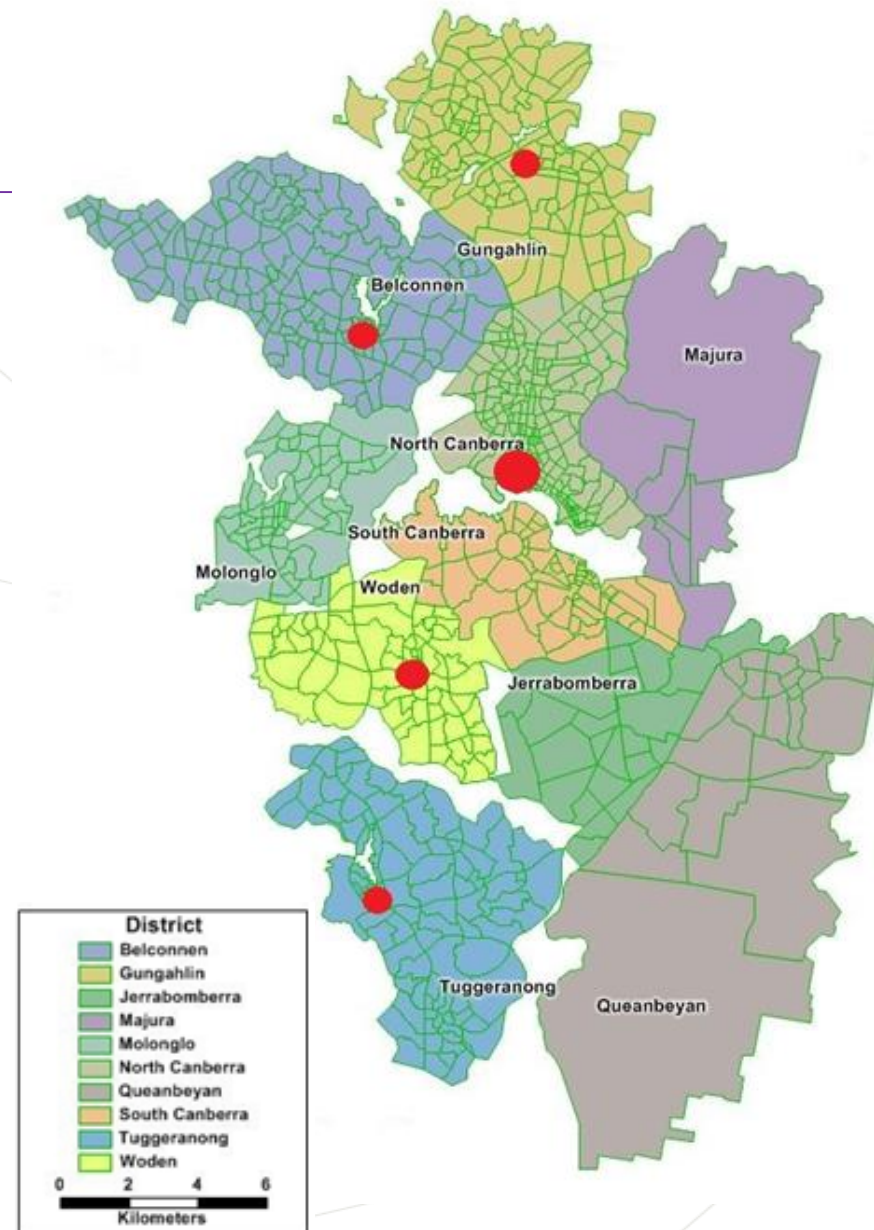


ACT
Government

Transport Canberra
and City Services

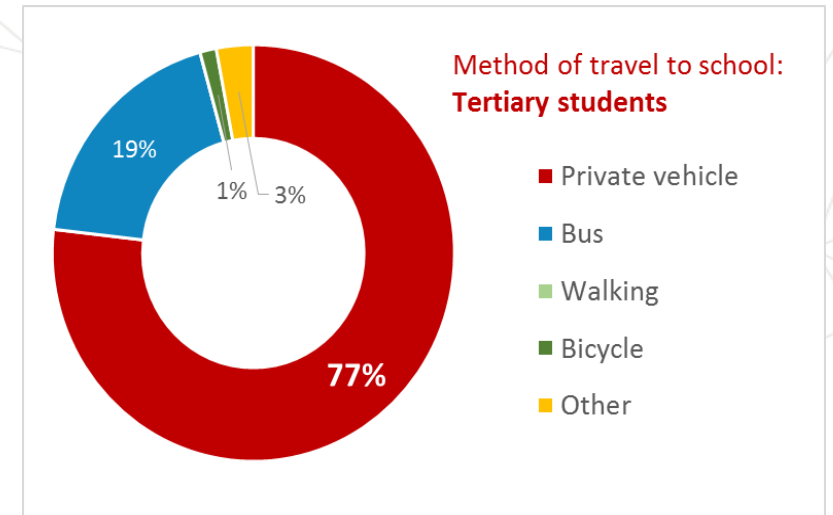
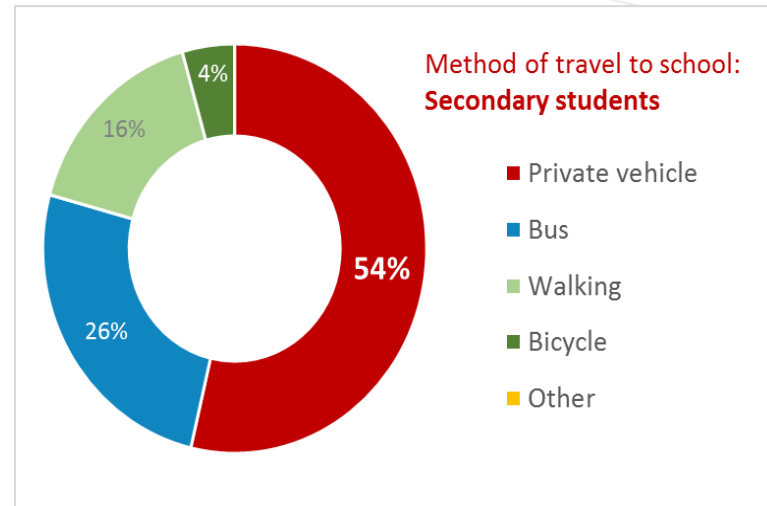
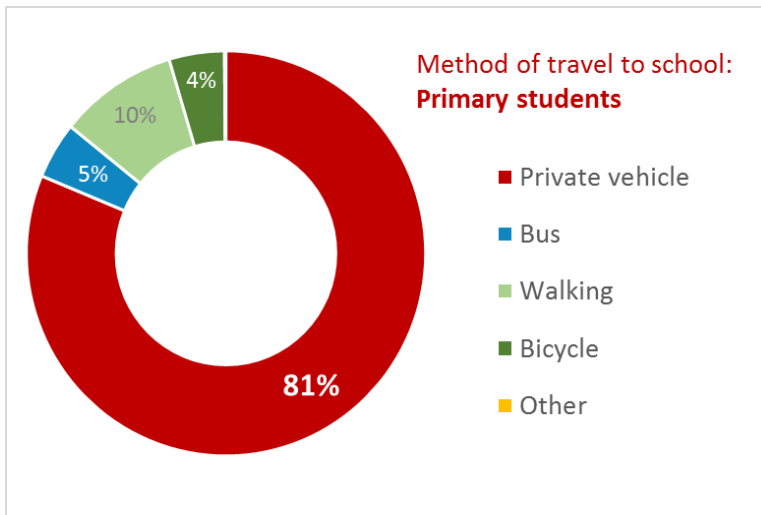
Overview of the ACT

- 400,000+ residents and growing fast.
- Australian Government employment has traditionally resulted in a well educated, highly mobile and affluent community demographic.
- High quality of life – a ‘30 minute city.’
- In an average group of 100 Canberrans, 61 people are couples with children or one parent families.



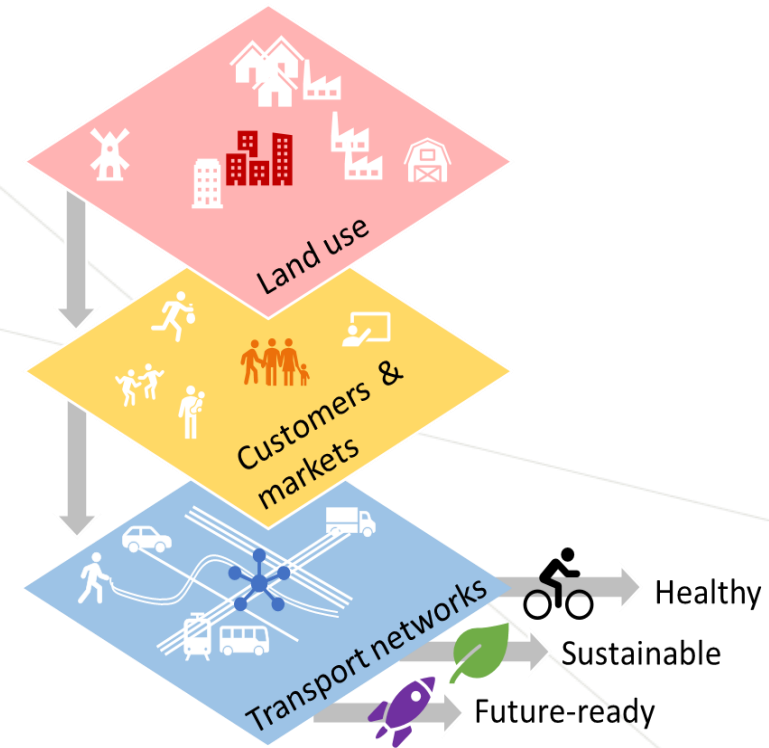
How do students in Canberra travel between home and school?

- Most students travel to school by car in Canberra.
- Significant opportunity to increase active travel and public transport mode share for trips between home and education, especially for primary school students and tertiary students.



Why does our travel look like this?

- Concentration of workforce in some locations – 52% in city centre – but population dispersed across low density city.
- Families often choose schools close to one or both parents' workplace, not close to home.
- Short commuter peaks and less congestion than larger cities.
- Multi-vehicle households.
- Parking readily available and inexpensive / free.
- Time poor families and students.



School travel is just one component of the ACT's Transport for Canberra Strategy (2012), which is being refreshed in 2018 .

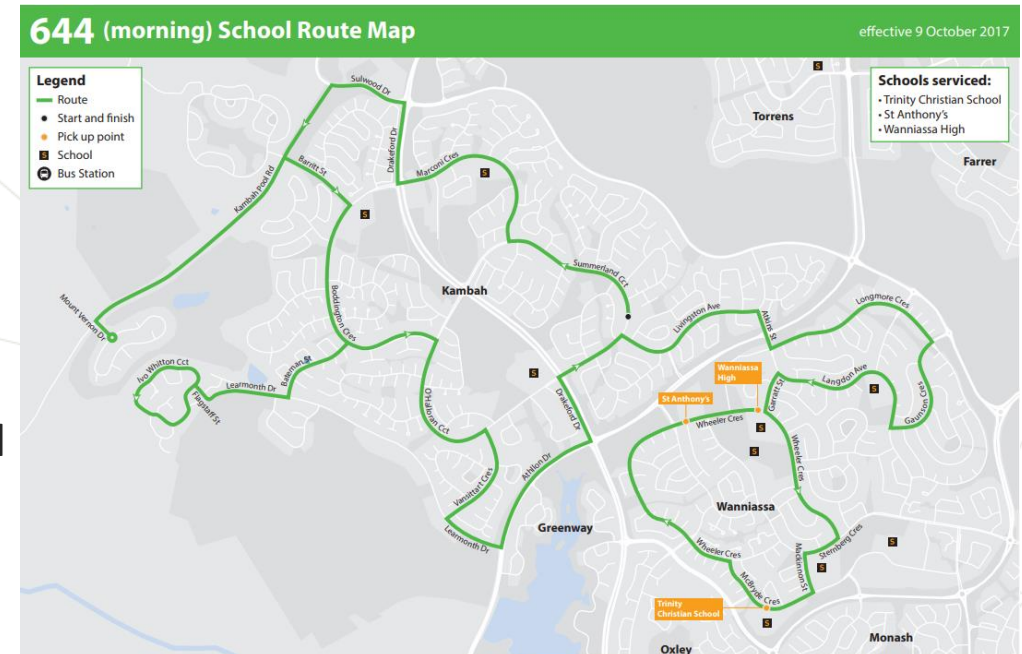
New Rapid Network

- Consultation on new network until 12 August 2018
- Changes respond to community feedback calling for:
 - quicker trip times and more direct routes;
 - more frequent and reliable services; and
 - increased services across on and off peak times.
- New network is based around
 - 10 high frequency, high capacity Rapid bus and light rail routes across the city; and
 - Local services and school services designed to connect with and complement Rapids.
- Planned network will deliver much higher frequency services, but requires more customers to interchange.



Current School Network

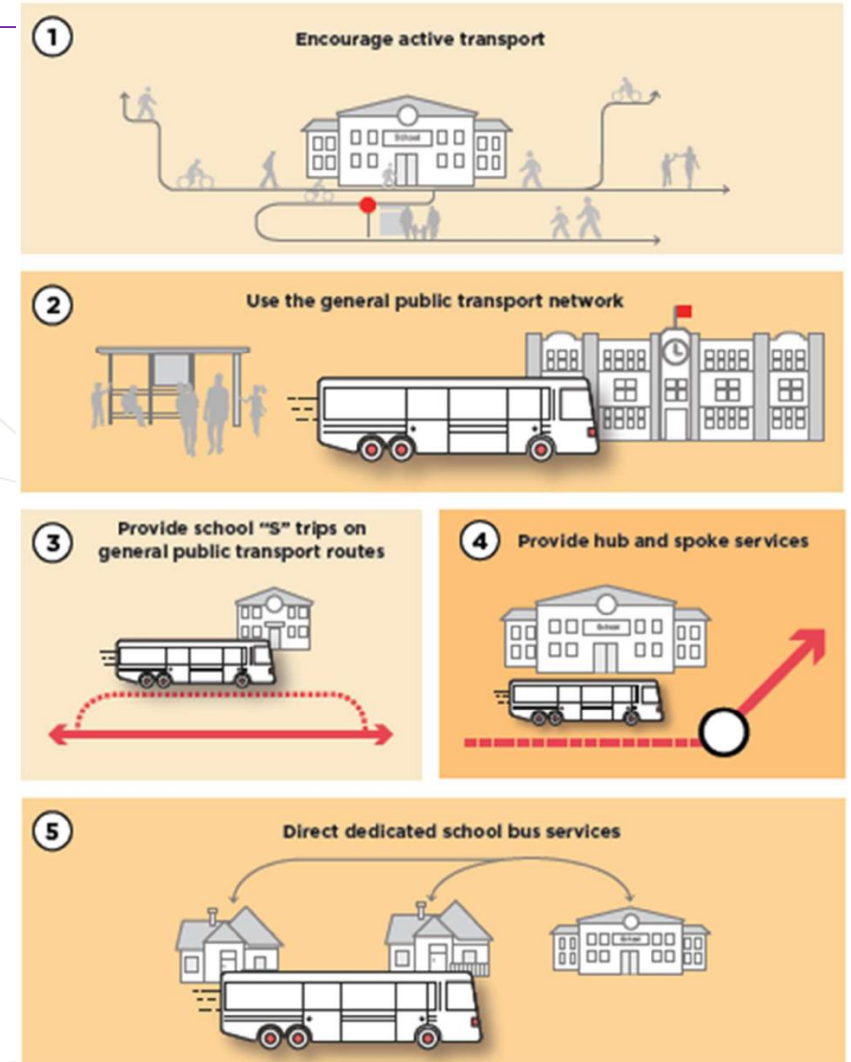
- Traditional approach to meeting travel demand from students was responsive and ad hoc – focussed on providing school buses where they were requested.
- Over time, this resulted in:
 - slow, long and winding suburban routes.
 - Dedicated school routes require substantial use of peak period transport resources.
 - Dedicated school services still not providing a better level of service for students, with 60% of school students who get to school by bus travelling on the regular network.
 - Many routes have AM-only or PM-only services, creating a situation where students can travel to school on public transport yet cannot travel home again, or vice versa; and
 - School-only bus stops may result in students becoming stranded if they miss their bus.



School route 644 (65 minute run time)

A new approach – “How will kids get to school?”

- ACT Government is now consulting on a new approach to school travel which will move away from providing dedicated direct school bus services.
 - The starting point is asking “How will kids get to school?”
- Draft school bus services policy sets out a hierarchy of school travel options reflecting whole-of-government priorities, not just transport policy considerations:
 - Active travel as the first, best option where feasible;
 - Use of regular route services, which are designed from the start to better serve students and schools;
 - Variation of regular route services;
 - Hub and spoke school services that connect with the regular network at key interchanges; and
 - Conventional suburb-to-school dedicated school bus services where appropriate.
- Designed to drive a significant shift away from car travel, alongside initiatives to encourage walking and cycling.



What does that mean in practice for school students?

- A 30% increase in bus trips past schools provides better student transport services.
- More students using regular route services, including interchanging, gaining a skill for life instead of only using school services.
- Less chance of being stranded if students miss their usual bus.
- More independence and mobility for older students.
- Better support and customer service for students at interchanges.
- More direct trips between home and school, with fewer long, circuitous routes.



Better services for tertiary students

- Canberra is a growing education hub and tertiary students are a core market for Transport Canberra.
- Planned network will provide better services for tertiary students at key universities, CIT and other education providers.
- Transport Canberra sees the network as key to supporting broader government objectives, such as further growing tertiary education in Canberra.
 - Better all-day, seven day bus services (including evening and weekends) will make it easier for students to live in more affordable housing further away from campus, making study in Canberra a more attractive option.
- The ACT is also a tertiary education hub for the surrounding Canberra Region.



**A NEW BUS NETWORK
FOR CANBERRA**

More buses, more often, 7 days a week

Find out more about the new network
and provide feedback at yoursay.act.gov.au

CANBERRA
IS BETTER
CONNECTED

ACT
Government

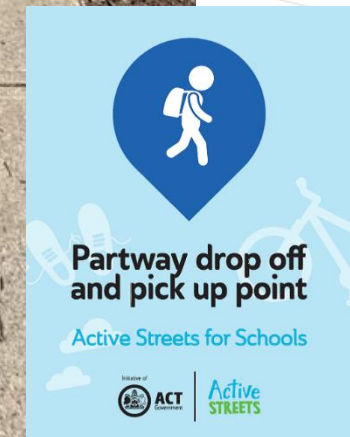
TTC
Transport
Canberra

School Travel and Safety

- The new public transport network promotes healthy and sustainable travel methods for students of all ages, and provides the opportunity for younger students to acquire valuable life skills.
- Strong focus on safe journeys to school:
 - Investment in safety initiatives and customer service officers at key interchanges to assist students.
 - School Crossing Supervisors Program funded for 20 schools.
 - Active Streets for Schools Program underway at 25 schools, providing infrastructure improvements such as better footpath connections, new pram ramps and the relocation of bike storage facilities.
 - The removal of school-only bus stops, removing the risk of students becoming stranded if they miss their bus.
- **Real impact:** Between 2012 and 2015, ACT Government's *Ride or Walk to School Program* delivered close to **10% increase** in active travel mode share at participating schools, compared to almost **15% fall** at other schools.



Active Streets for Schools



Bike Racks on Buses

Canberra has the most extensive network of bicycle-rack enabled bus routes in Australia, with over 92% of Transport Canberra buses fitted with bicycle racks.



Future Transport in the ACT

- The new rapid bus network and introduction of light rail will create a more frequent, reliable and affordable public transport network which is easily accessible for all Canberrans, empowering students to make better and healthier travel decisions.
- Community benefits over the next 30 years are expected to be almost twice as great as the predicted ACT Government investment required to support active travel growth.
 - Proposed improvements to Canberra's active travel networks are estimated to add around 400,000 cycle trips and 100,000 extra walking trips per year by 2031.
- The ACT Government's future focus for student travel includes:
 - Increasing public transport patronage and active travel participation;
 - Providing greater frequency and flexibility of services; and
 - Reducing private vehicle usage for school-related travel.

