

# Connecting Brisbane – Transforming the public transport system

BIC 2017 National Annual Conference

13/11/17

Matthew Longland

Deputy-Director General

Queensland Department of Transport and Main Roads





**Customers  
first**



**Unleash  
potential**



**Be  
courageous**



**Ideas into  
action**



**Empower  
people**







# Queensland Government's objectives for the community

## Advance Queensland



**ADVANCE**  
**QUEENSLAND**

made for innovation

# Our strategic plan



# About us

## Creating a single integrated transport network accessible to everyone

### We manage:



**33,353 km**  
state-controlled roads



**3078**  
bridges



**20**  
ports

### There were:



**3.6m**  
drivers licensed



**5.1m**  
vehicles registered



**3259**  
taxis licensed



**232,901**  
recreational boat  
registrations



**866,194**  
recreational  
boat licences

### We serve:



**3.39m**  
customers served  
face-to-face at  
**59**  
Customer Service Centres



Our customers conducted  
**7.2m**  
online services

### Services provided:



**178m**  
in SEQ



**11.9m**  
outside SEQ

trips taken annually on bus,  
rail, ferry and light rail



**2.6m**  
go cards  
in use



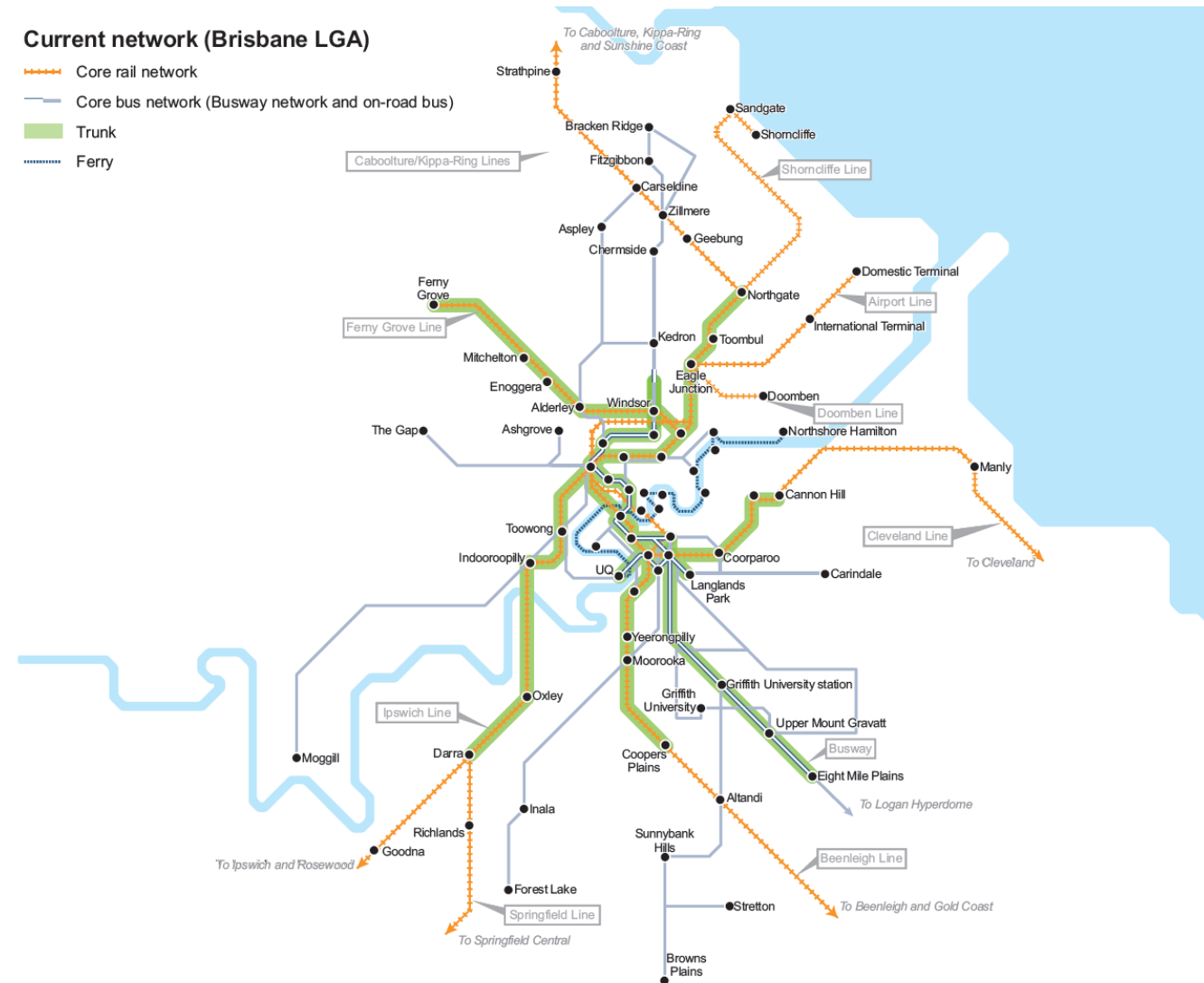
**Over 485,000**  
passengers travel on  
the SEQ network on  
average each day

Statistics sourced from the Department of Transport  
and Main Roads Annual Report 2016–17

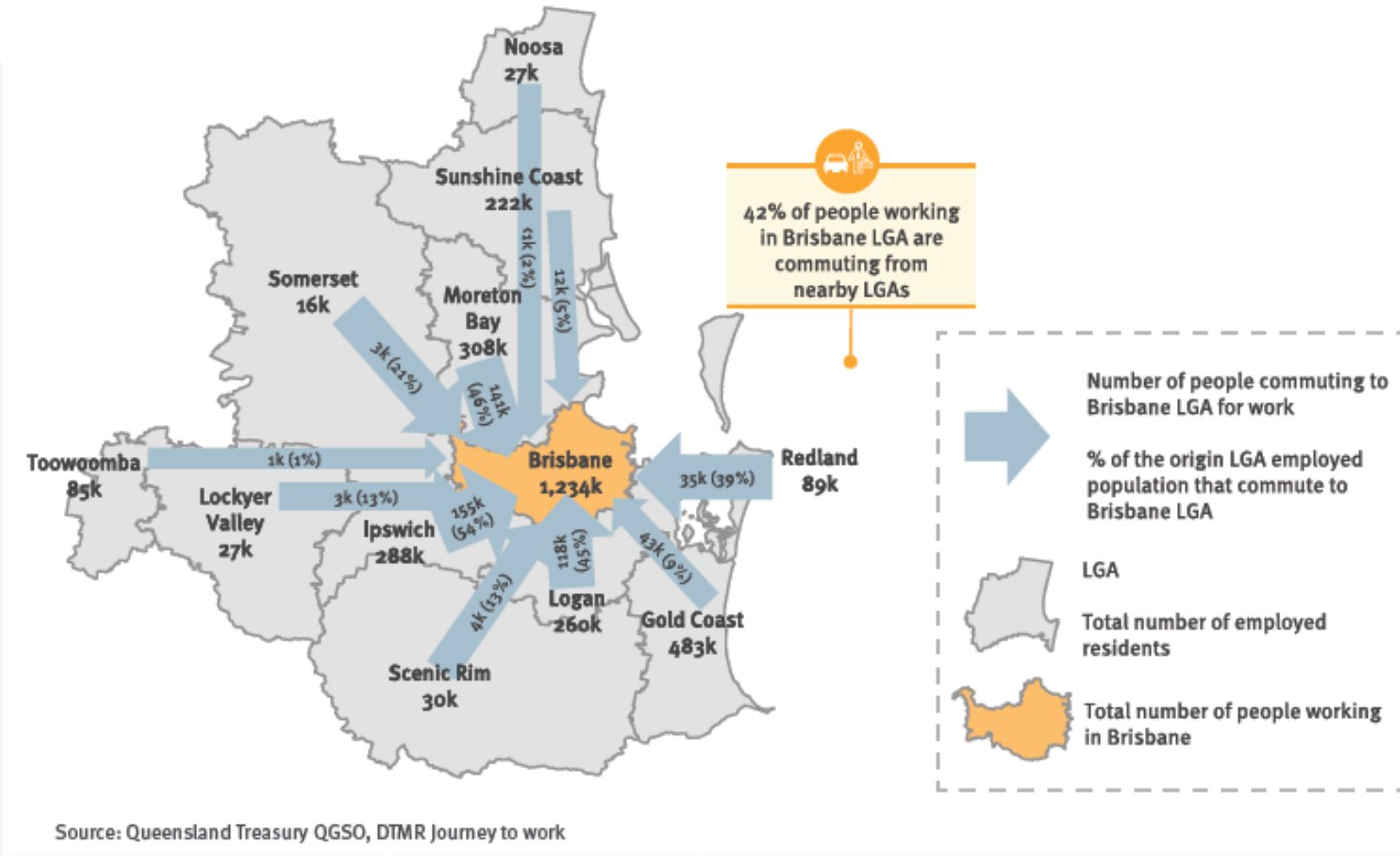
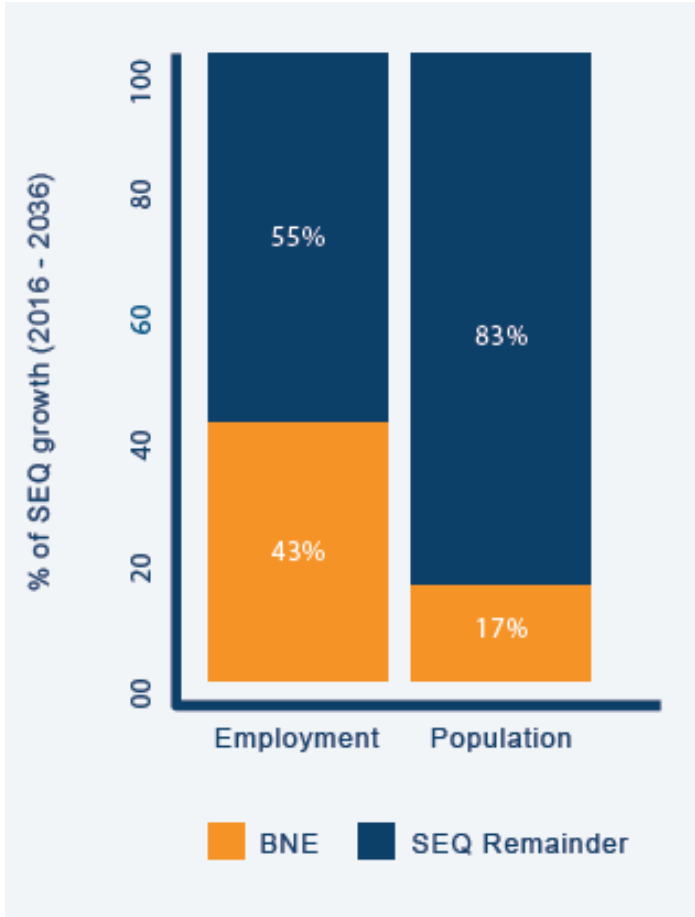


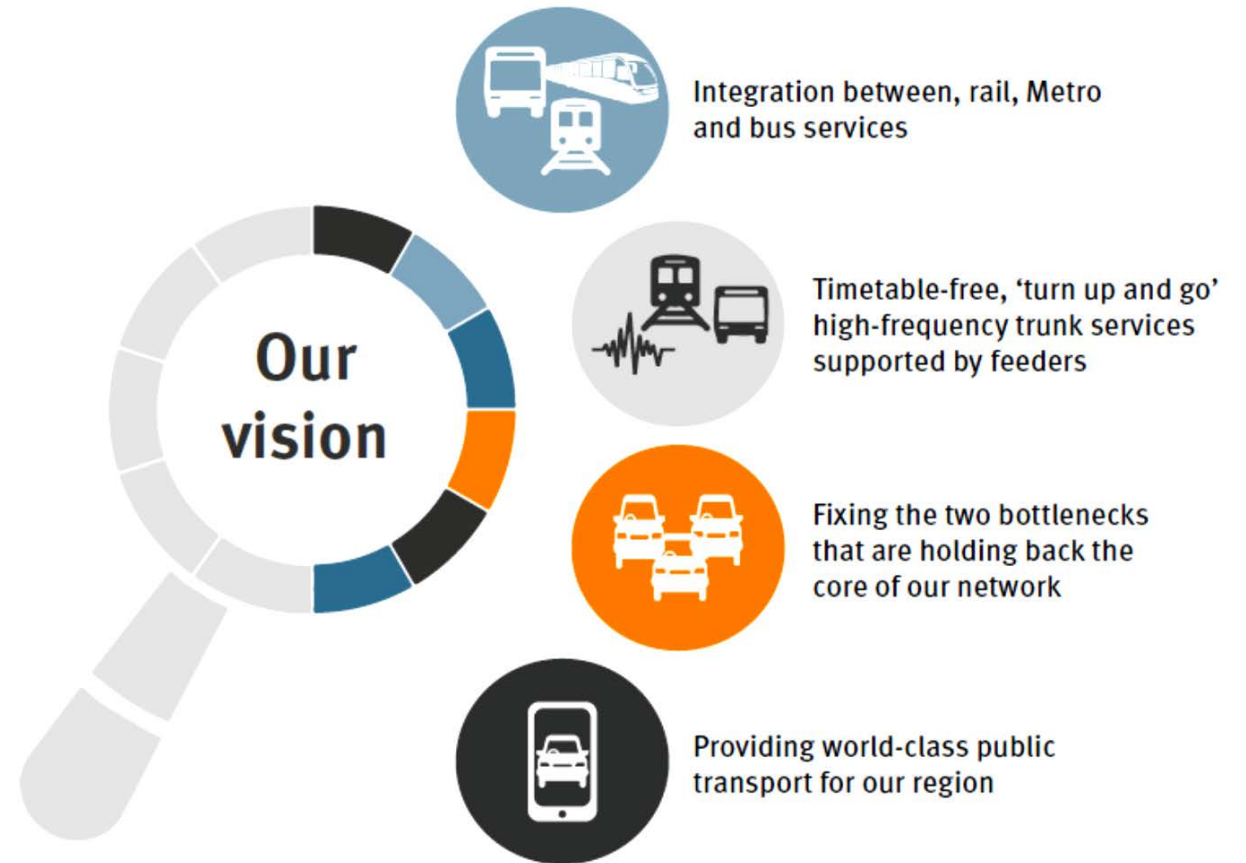
# Public transport in Brisbane today

- Each day in Brisbane, TransLink manages:
  - **11,400** bus services
  - **740** train services
  - **540** ferry services
  - **29 km** of busways
  - **1,221** buses in the Brisbane City Council fleet plus private operators
- We support complementary solutions:
  - Demand responsive transport
  - Ride sharing
  - Real time passenger information
  - Park 'n' ride
- In South East Queensland, **7.5%** of all journeys are made by public transport
- This increases to **58%** in Brisbane CBD
- High frequency services represent **45.4%** of the total bus network patronage



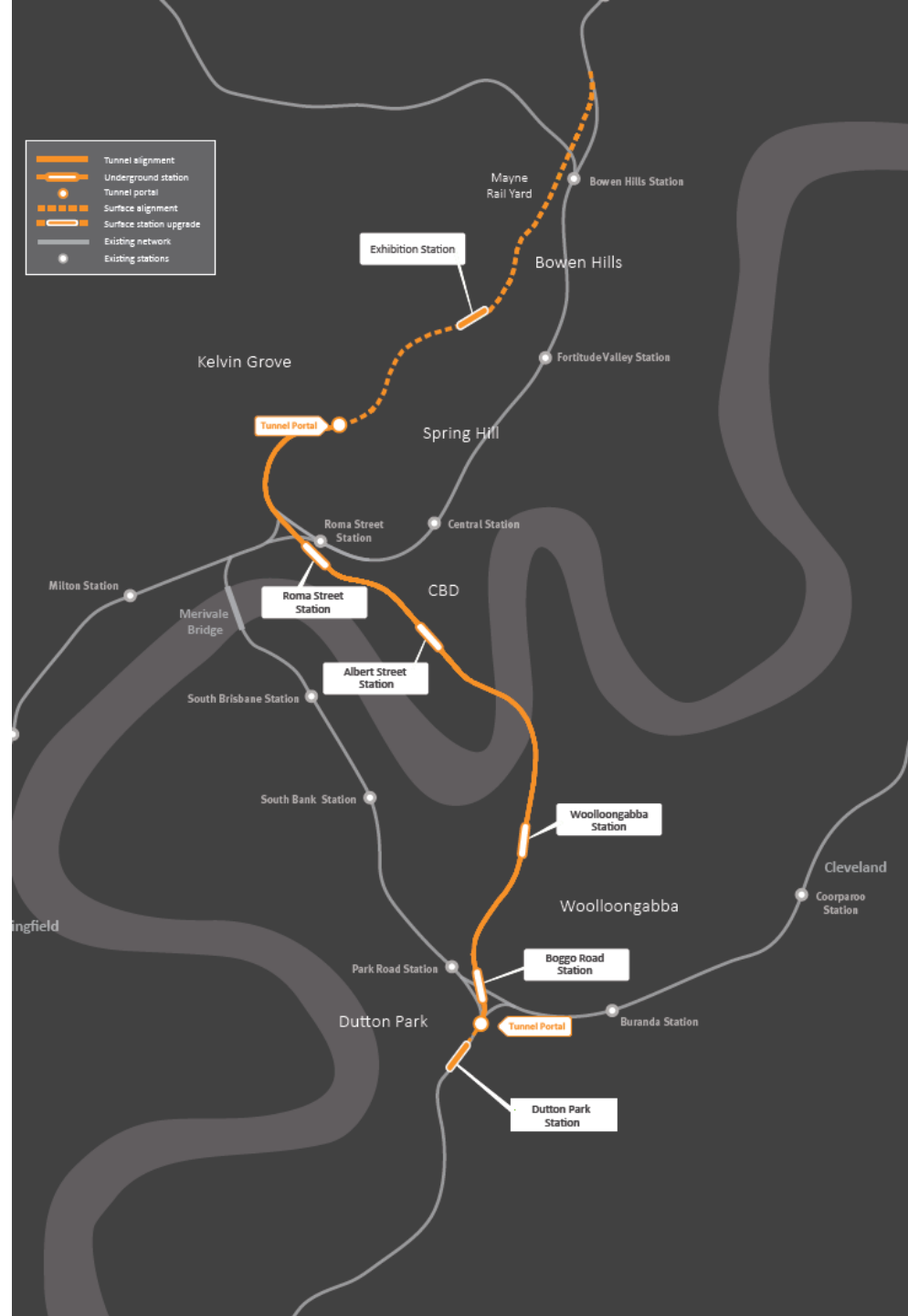
# The growth challenge







# Cross River Rail alignment



Source: Cross River Rail Business Case

## Brisbane Metro Network

### Legend

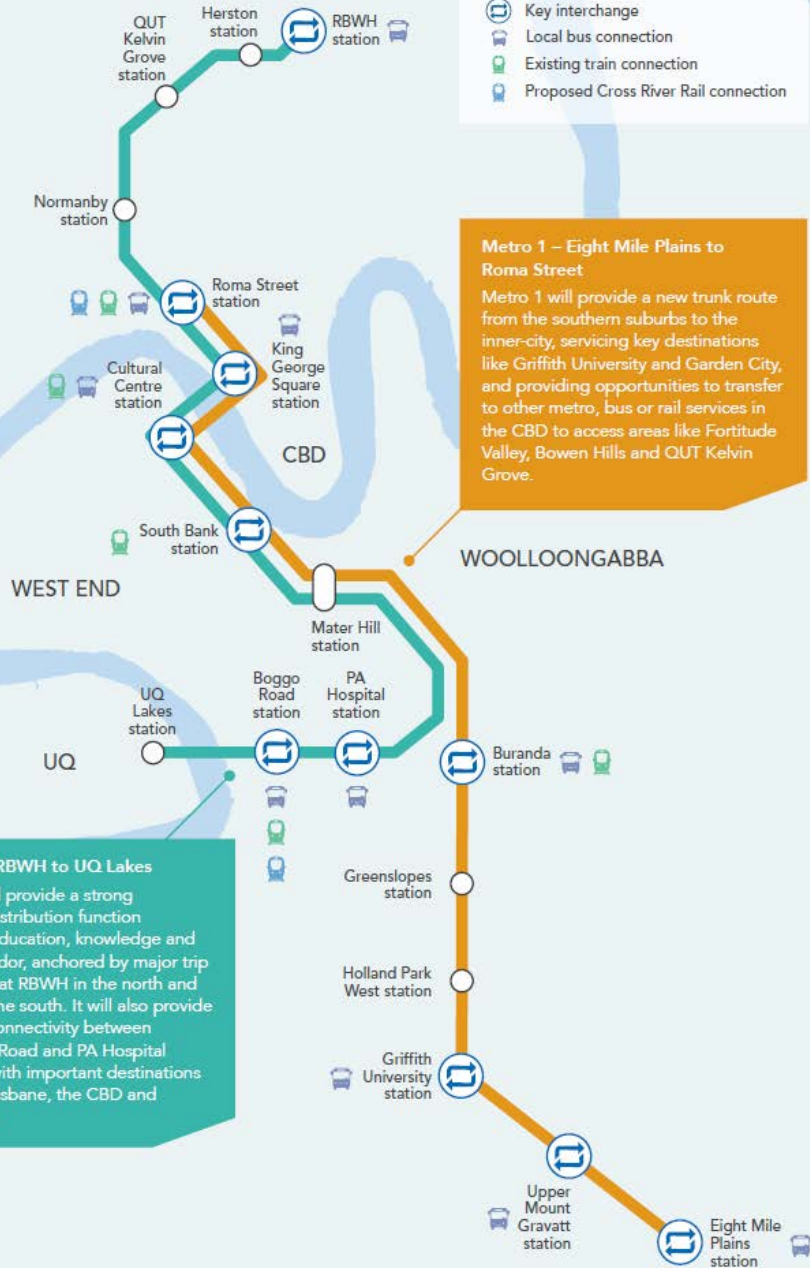
- Metro 1 line
- Metro 2 line
- Key interchange
- Local bus connection
- Existing train connection
- Proposed Cross River Rail connection

### Metro 1 – Eight Mile Plains to Roma Street

Metro 1 will provide a new trunk route from the southern suburbs to the inner-city, servicing key destinations like Griffith University and Garden City, and providing opportunities to transfer to other metro, bus or rail services in the CBD to access areas like Fortitude Valley, Bowen Hills and QUT Kelvin Grove.

### Metro 2 – RBWH to UQ Lakes

Metro 2 will provide a strong inner-city distribution function along the education, knowledge and health corridor, anchored by major trip generators at RBWH in the north and the UQ in the south. It will also provide cross-city connectivity between the Boggo Road and PA Hospital precincts, with important destinations at South Brisbane, the CBD and inner north.



# Brisbane Metro alignment

Source: Brisbane Metro Business Case

# Cross River Rail and Brisbane Metro interface

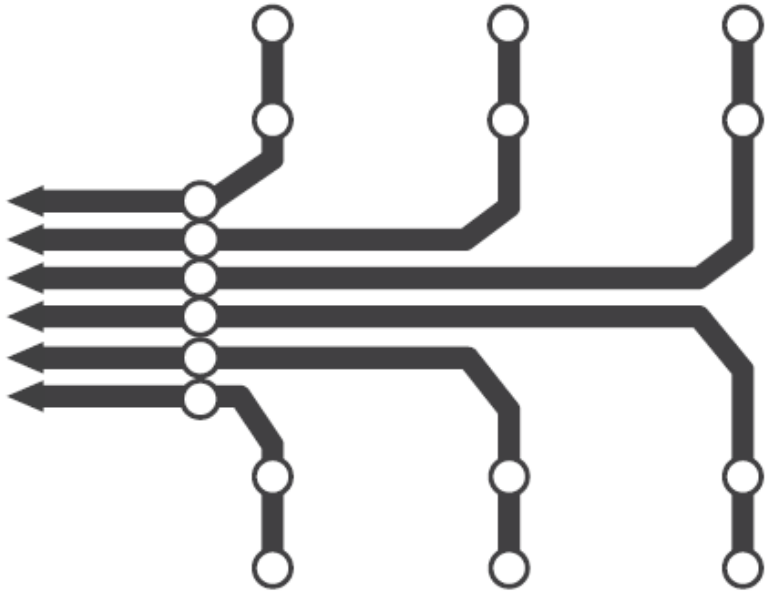


Source: [www.crossriversrail.qld.gov.au](http://www.crossriversrail.qld.gov.au)

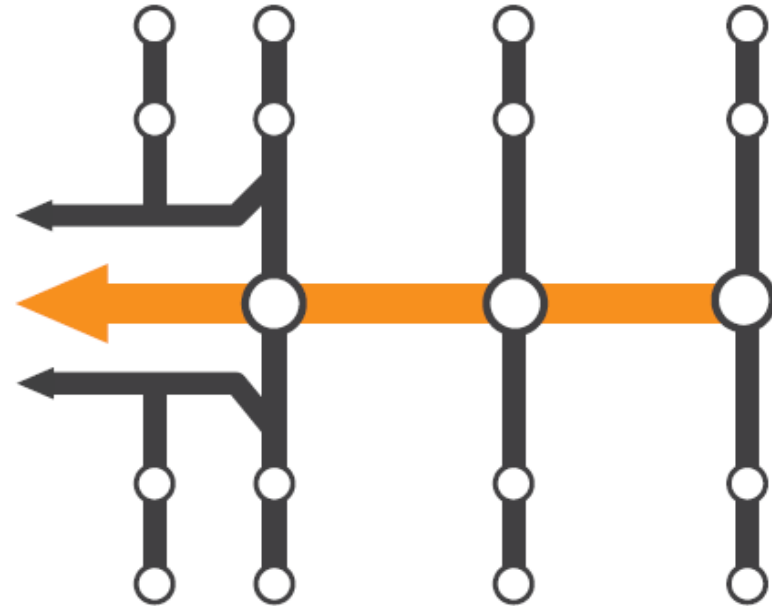


# A complementary **hybrid** network

Radial single seat journeys



“Turn up and go” trunk and feeder network



# Investment plan



## Services:

A simple network that is easy to understand. Our plan is based on the hybrid network described in both Cross River Rail and Brisbane Metro projects.



## Infrastructure:

The future network requires more interchange with facilities designed to improve the customer experience.



## Technology:

Infrastructure and multi-medium communication that leverages data to ease anxiety for customers and refine the network



## Priority:

New and upgraded infrastructure that maximises throughput with customised priority measures designed for each location

---

# Thank you and stay connected

---



**Twitter** @TMRQld



**Facebook** @TMRQld



**LinkedIn** Department of Transport and Main Roads



**Blog** [blog.tmr.qld.gov.au](http://blog.tmr.qld.gov.au)